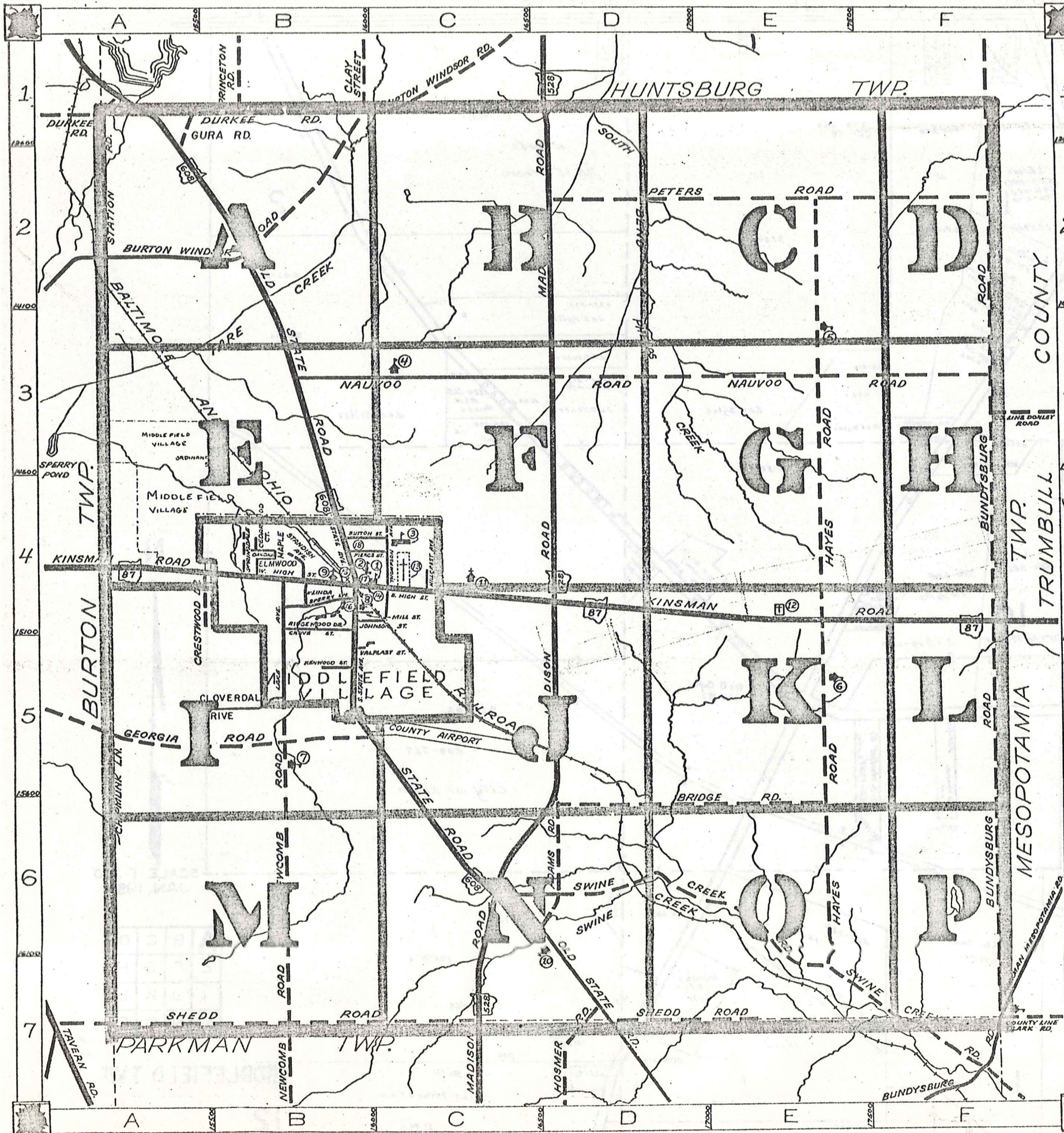


ROAD INDEX



- M.V. = MIDDLEFIELD VILLAGE
- A ADAMS RD. D6 I
 - B BRIDGE RD. D6-E6
BUNDYSBURG RD. F1-F7
BURTON WINDSOR RD. A2-B1
BUTTON ST. (M.V.) B4
 - C CHIPMUNK LN. A5-A6
CRESTWOOD DR. B4
CLOVERDALE DR. B5
 - D DURKEE RD. A1-B1
 - E E. HIGH ST. (M.V.) B4-C4
ELMWOOD ST. M.V.
 - F GEORGIA RD. A5-B5
GROVE ST. (M.V.) B4
GURA RD. A1
 - G HAYES RD. E2-E7
HILLCREST AVE. (M.V.) C4
HOSMER RD. D7
 - H HAYES RD. E2-E7
HILLCREST AVE. (M.V.) C4
HOSMER RD. D7
 - I JOHNSON ST. (M.V.) B4
 - J JOHNSON ST. (M.V.) B4
 - K KENWOOD ST. (M.V.) B5
KINSMAN RD. A4-F4
 - L LAKE AVE. (M.V.) B4-B5
LINDA AVE. (M.V.) B4
 - M MADISON RD. D1-C7
MILL ST. (M.V.) B4
MAPLE AVE. M.V.
 - N NAUVOO RD. B3-F3
NEWCOMB RD. B5-B7
N. STATE AVE. (M.V.) B4
 - O OLD STATE RD. A1-D7
 - P PETERS RD. D2-F2
PIERCE ST. (M.V.) B4
 - Q RIDGEWOOD DR. (M.V.) B4
 - R RIDGEWOOD DR. (M.V.) B4
 - S SHEDD RD. A7-E7
S. STATE AVE. (M.V.) B4-B5
SPERRY LN. (M.V.) B4
SPRINGDALE AVE. (M.V.) B4
STANDISH AVE. (M.V.) B4
STATION RD. A1-A2
SWINE CREEK RD. C6-F7
 - T THOMPSON AVE. (M.V.) C4
 - U VALPLAST ST. (M.V.) B5
 - V VALPLAST ST. (M.V.) B5
 - W W. HIGH ST. (M.V.) B4
 - X
 - Y
 - Z

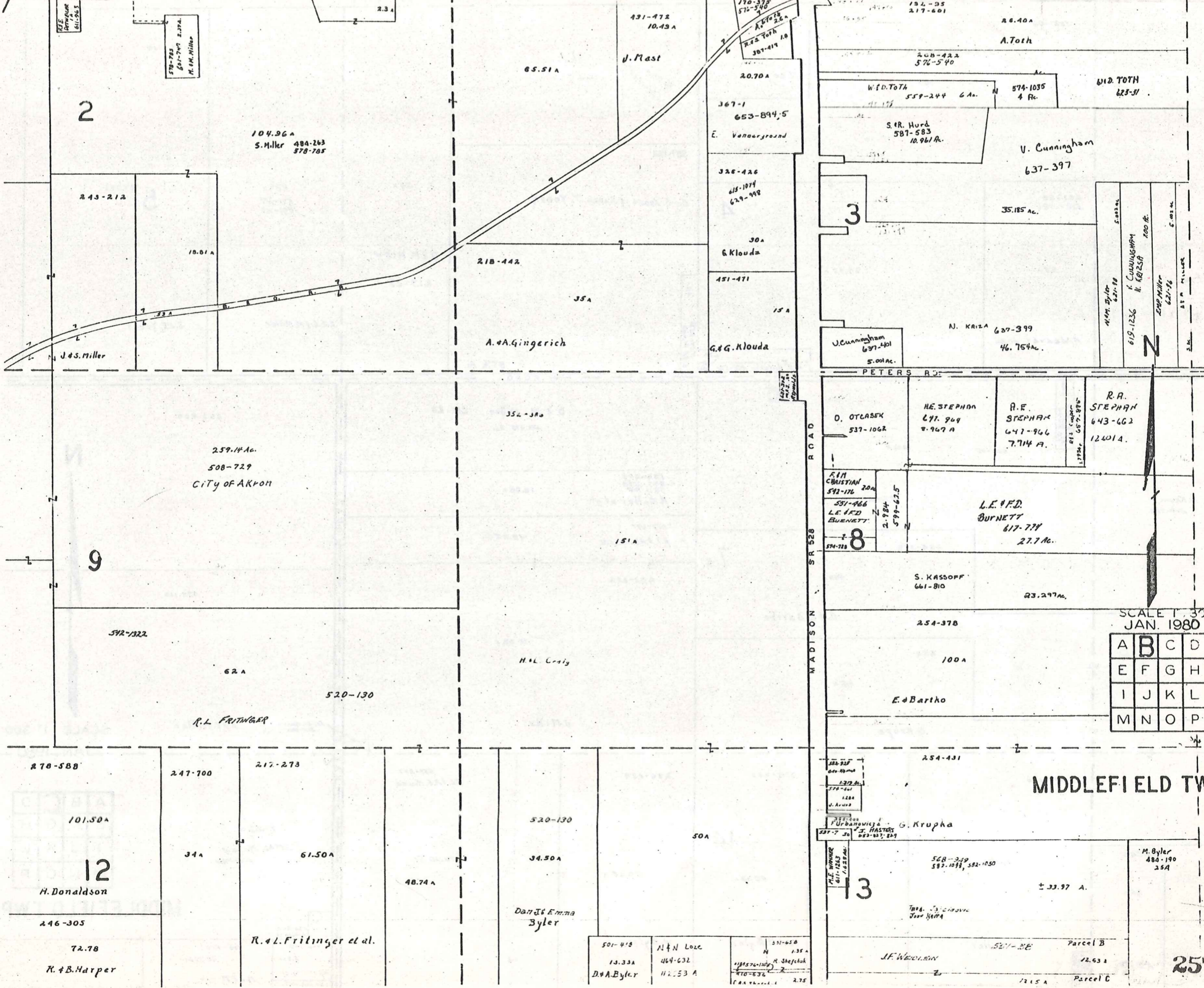
- 1 MIDDLEFIELD ELEMENTARY SCH.
- 2 CARDINAL JUNIOR HIGH SCHOOL
- 3 CARDINAL HIGH SCHOOL
- 4 AMISH SCHOOL
- 5 AMISH SCHOOL
- 6 AMISH SCHOOL
- 7 AMISH SCHOOL
- 8 THE FIRST METHODIST CHURCH
- 9 WESLEYAN METHODIST CHURCH
- 10 MENNONITE CHURCH
- 11 ST. LUCY'S CATHOLIC CHURCH
- 12 CEMETERY
- 13 MIDDLEFIELD CEMETERY
- 14 UNITED STATES POST OFFICE
- 15 MIDDLEFIELD VOL. FIRE DEPT.
- 16 MIDDLEFIELD VILLAGE HALL
- 17 MIDDLEFIELD PUBLIC LIBRARY
- 18 BETHESDA NURSING HOME

MIDDLEFIELD TOWNSHIP

SCALE: 1"=2000'
 O.J. ROBINSON
 GAUGA COUNTY ENGINEER

--- UNPAVED ROADS
 --- PAVED ROADS
 --- RAILROAD
 --- TOWNSHIP LINE
 --- COUNTY LINE
 --- VILLAGE LINE

DURKEE RD. HUNTSBURG TOWNSHIP



2

3

9

8

12

13

104.96 A
S. Miller 484-263
878-705

259.14 Ac.
508-729
CITY OF AKRON

R.L. FRITINGER

101.50 A
H. Donaldson
246-305
72.78
R. B. Harper

34 A
61.50 A
R. L. Fritinger et al.

34.50 A
Dan & Emma
Byler

501-418
13.33 A
D. A. Byler

M & N Lutz
464-632
11.53 A

551-628
1.35 A
R. Shefchek

A. A. Gingerich

65.51 A
J. Mast
20.70 A
367-1
653-894,5
E. Vannoyground
326-426
615-1074
629-998
30 A
G. Klouda
451-471
15 A
G. G. Klouda

26.40 A
A. Toth
208-422
576-540
W. D. Toth
559-244 6 A.
S. R. Hurd
587-583
10.961 A.
V. Cunningham
637-397
35.185 Ac.
N. KATZ
627-399
46.754 Ac.
U. Cunningham
637-401
5.00 Ac.

PETERS RD.
D. OTCASEK
537-1062
NE STEPHAN
677-949
7.967 A
R. F. STEPHAN
647-966
7.714 A.
R. A. STEPHAN
643-662
12.401 A.
L. E. F. D. BURNETT
617-777
27.7 Ac.
S. KASSOFF
661-810
23.297 Ac.
254-378
100 A
E. Bartho

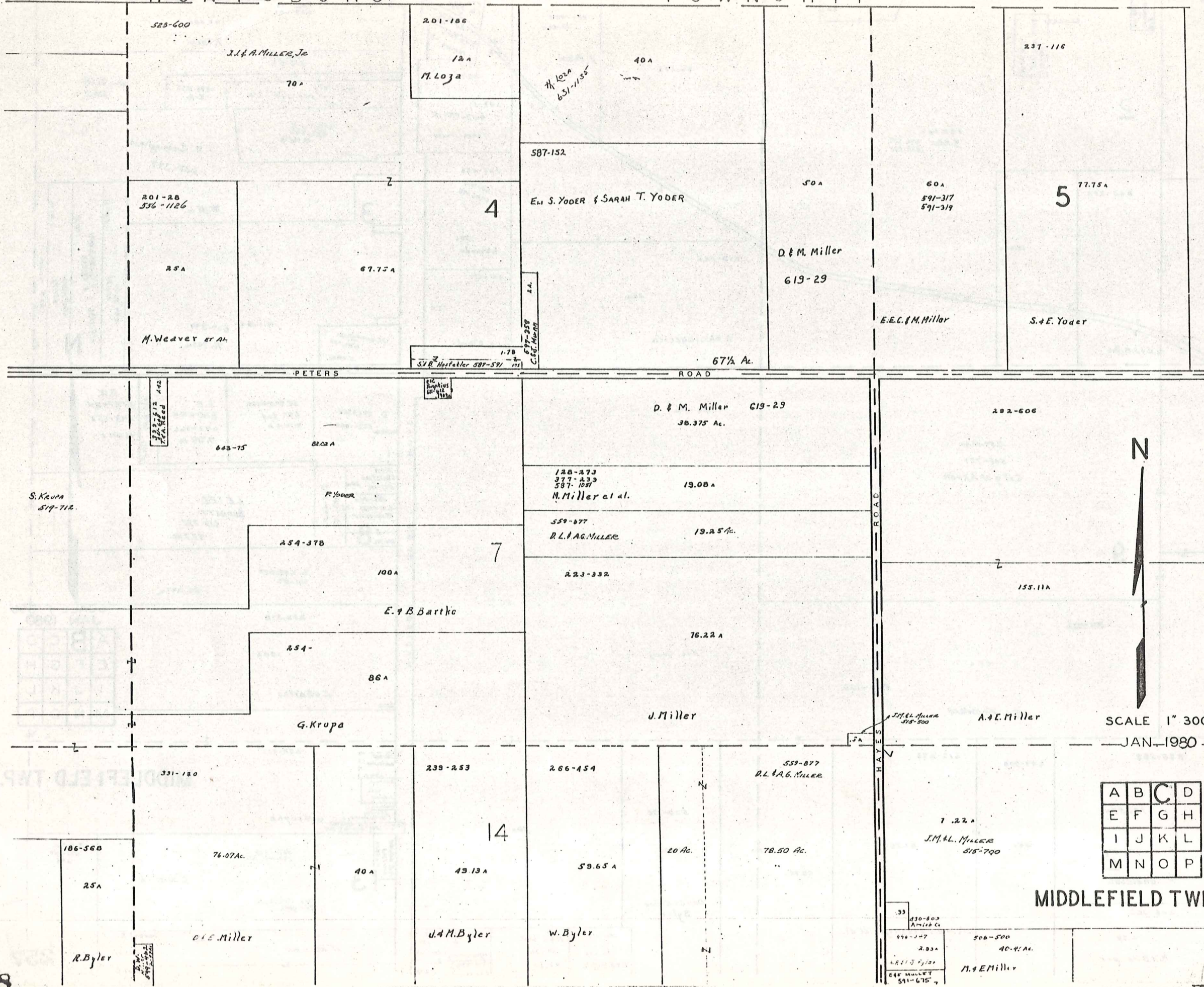
MIDDLEFIELD TWP.
254-431
G. Krupha
568-229
582-1033, 582-1050
± 33.97 A.
M. Byler
484-190
25 A
J. E. WOODRIN
527-28
Parcel B
22.63 A
Parcel C
2.15 A

SCALE 1" = 300'
JAN. 1980

A	B	C	D
E	F	G	H
I	J	K	L
M	N	O	P

HUNTSBURG

TOWNSHIP

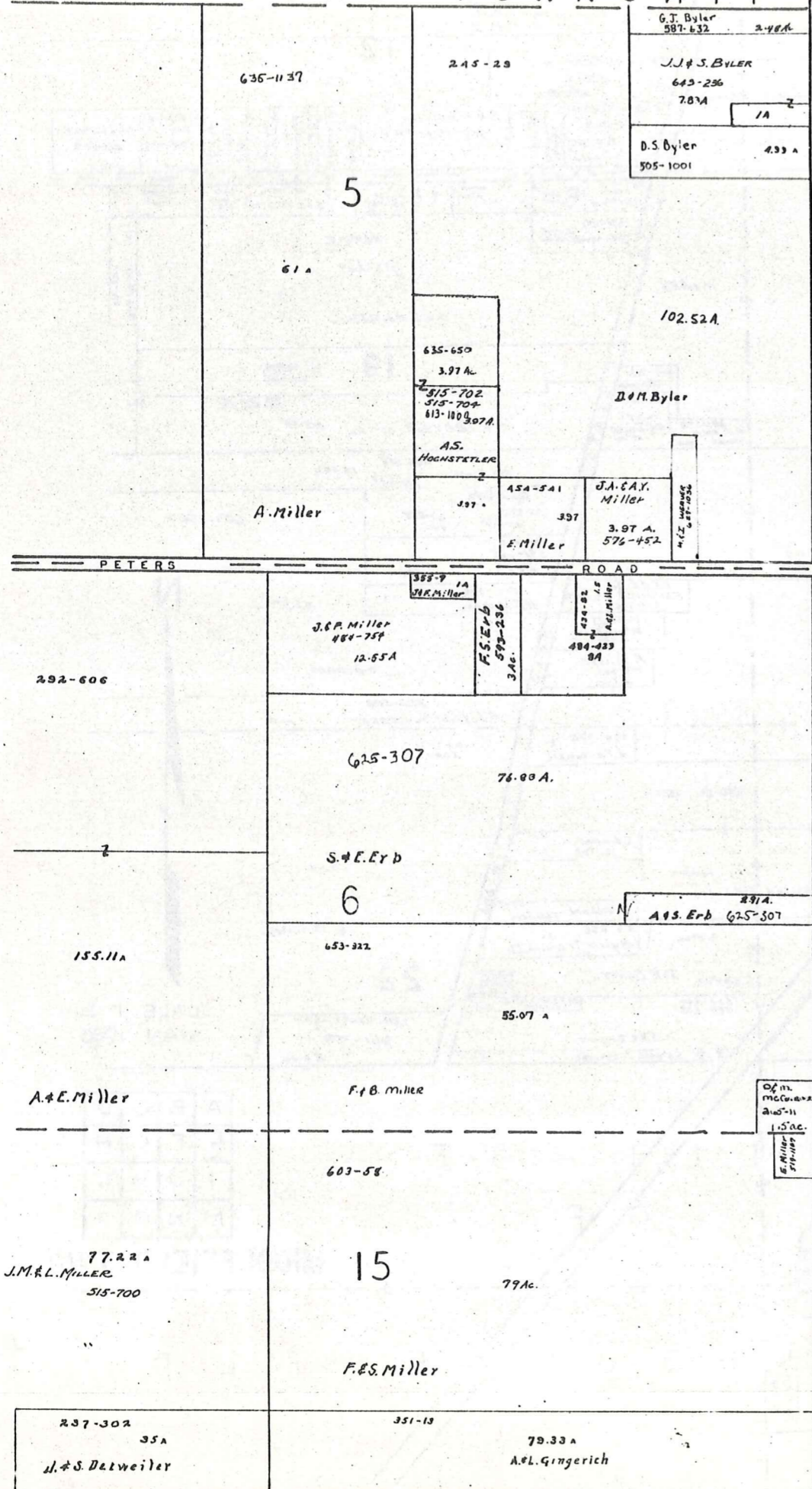


SCALE 1" 300'
JAN-1980

A	B	C	D
E	F	G	H
I	J	K	L
M	N	O	P

MIDDLEFIELD TWP

HUNTSBURG TOWNSHIP



BUNDYSBURG ROAD

COUNTY

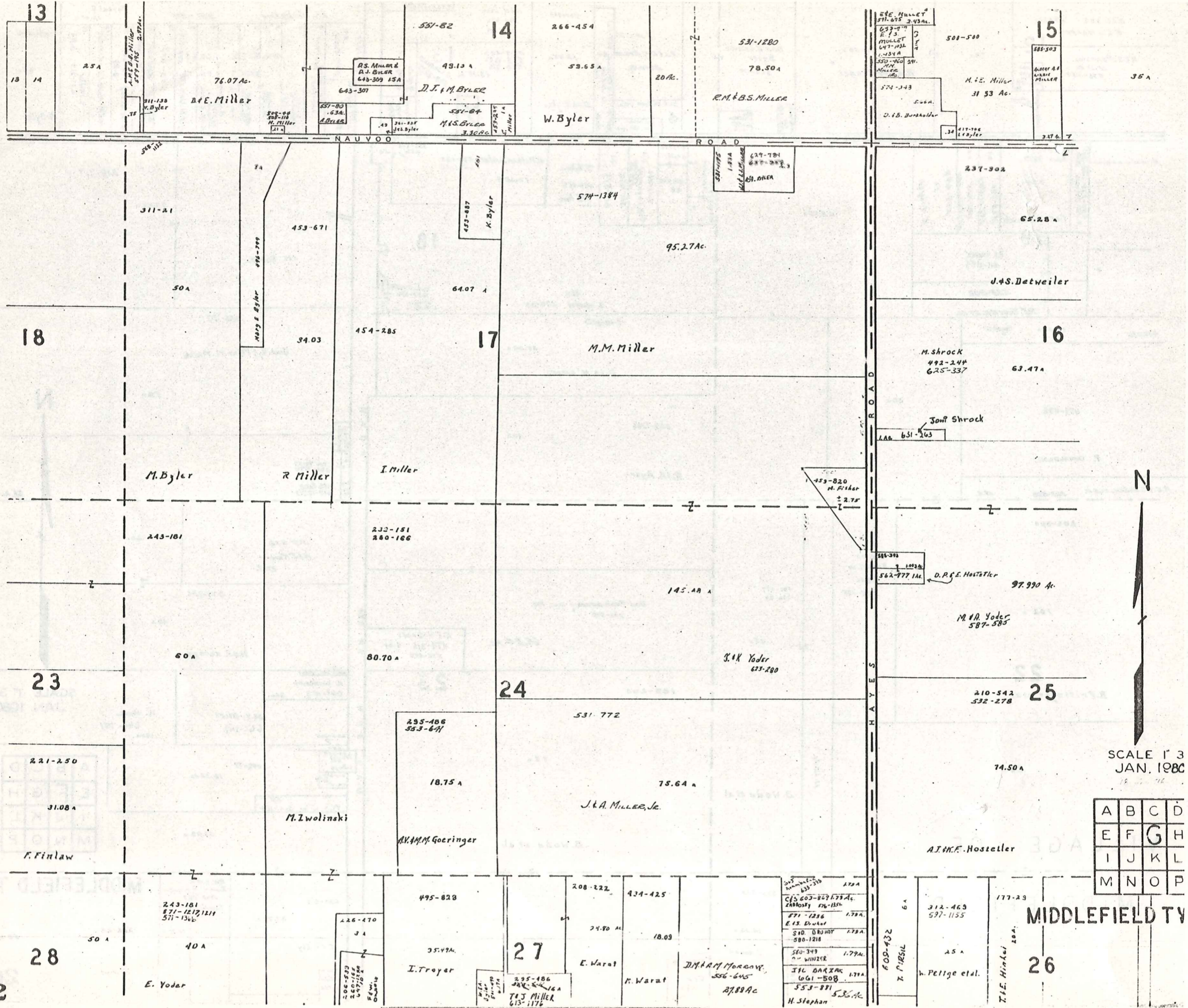
TRUMBULL



SCALE 1" = 300'
JAN. 1980

A	B	C	D
E	F	G	H
I	J	K	L
M	N	O	P

259
MIDDLEFIELD TWP.



SCALE 1" = 3'
 JAN. 1988

A	B	C	D
E	F	G	H
I	J	K	L
M	N	O	P

MIDDLEFIELD TWP

262

28

27

26

E. Yoder

I. Troyer

E. Warat

M. Warat

J.M.A.M. Morgan
 556-645
 27,889 Ac

245
 178A
 C/S 603-807 179A
 2400sq ft 176-1154
 871-1286 178A
 E. S. DUKAK 178A
 510 DUKAK 178A
 580-1218
 580-349 179A
 W. WINTER
 J.L. DAKZAK 179A
 661-508
 553-871
 H. Stephan

609-432
 T. P. HESIL

h. Pettige et al.

T.E. Hinkel

F. Finlaw

M. Zwolinski

A.K.M. Goeringer

J.A. Miller, Jr.

A.J.H.F. Hosteller

M. Byler

R. Miller

I. Miller

M.M. Miller

M. Shrock
 492-244
 625-337

Jon Shrock

M. R. Yoder
 587-585

D.R.G. Hostetter

J.A.S. Detweiler

W. Byler

R.M. & B.S. MILLER

D.E. Miller

D.J. & M. BYLER

M.S. Byler
 330 Ac

M.E. Miller
 31 53 Ac

D.B. Burkholder

500-500

317-106
 L. Byler

327 1/2

65.28 A

63.47 A

97.990 Ac

74.50 A

574-1384

95.27 Ac

64.07 A

454-285

34.03

453-671

50 A

311-21

548-111

266-454

53.65 A

20 Ac.

531-1280

78.50 A

551-82

43.13 A

76.07 Ac.

25 A

13

14

15

17

16

24

25

23

221-250

31.08 A

50 A

40 A

226-470

3 A

495-828

35.47 A

208-222

24.80 Ac

434-425

18.09

178A

178A

178A

179A

179A

179A

179A

6 A

25 A

177-23

312-469
 597-1155

20 A

10 A

10 A

10 A

10 A

10 A

10 A

10 A

10 A

10 A

10 A

10 A

10 A

10 A

10 A

10 A

10 A

10 A

10 A

10 A

10 A

10 A

10 A

10 A

10 A

10 A

10 A

10 A

10 A

10 A

10 A

10 A

10 A

10 A

10 A

10 A

10 A

10 A

10 A

10 A

10 A

10 A

10 A

10 A

10 A

10 A

10 A

10 A

10 A

10 A

10 A

10 A

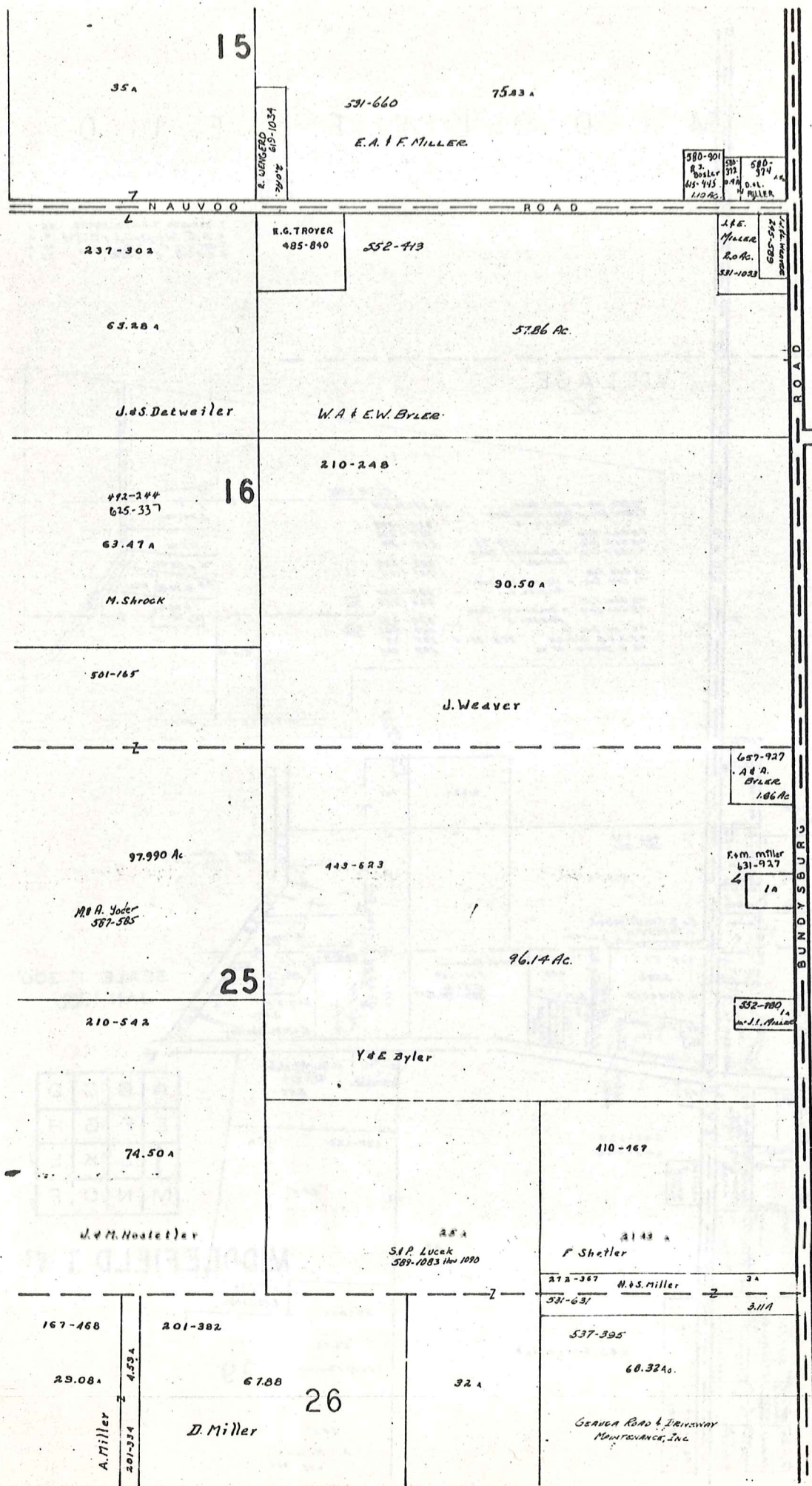
10 A

10 A

10 A

10 A

10 A



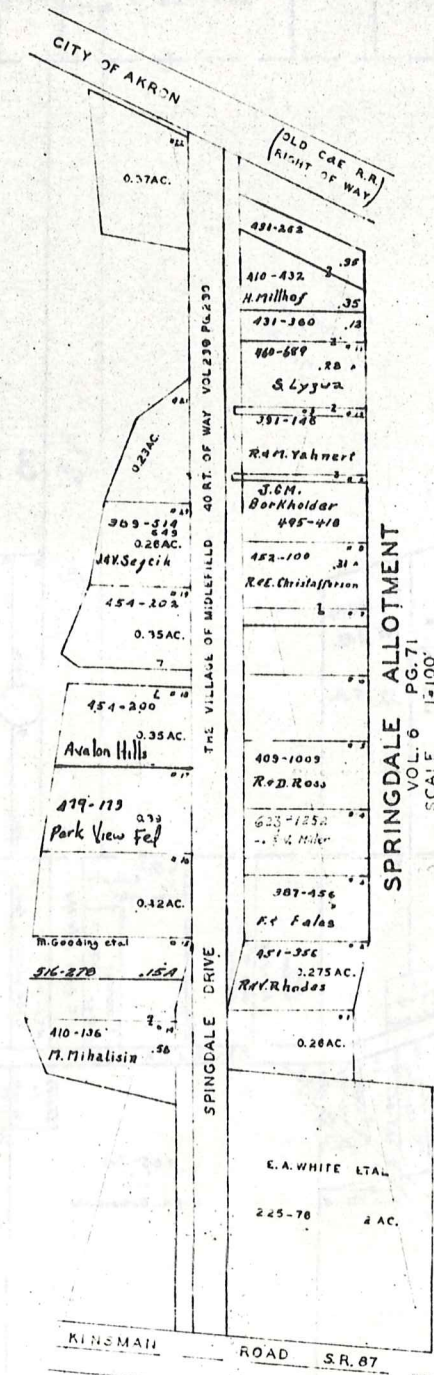
T R U M B U L L C O U N T Y

KINSMAN ROAD SR. 87

582-381 A 489 100-200 11 12 13 14 15 16 17 18 19 20	582-382 A 489 100-200 11 12 13 14 15 16 17 18 19 20	582-383 A 489 100-200 11 12 13 14 15 16 17 18 19 20	582-384 A 489 100-200 11 12 13 14 15 16 17 18 19 20	582-385 A 489 100-200 11 12 13 14 15 16 17 18 19 20	582-386 A 489 100-200 11 12 13 14 15 16 17 18 19 20	582-387 A 489 100-200 11 12 13 14 15 16 17 18 19 20	582-388 A 489 100-200 11 12 13 14 15 16 17 18 19 20	582-389 A 489 100-200 11 12 13 14 15 16 17 18 19 20	582-390 A 489 100-200 11 12 13 14 15 16 17 18 19 20
--	--	--	--	--	--	--	--	--	--

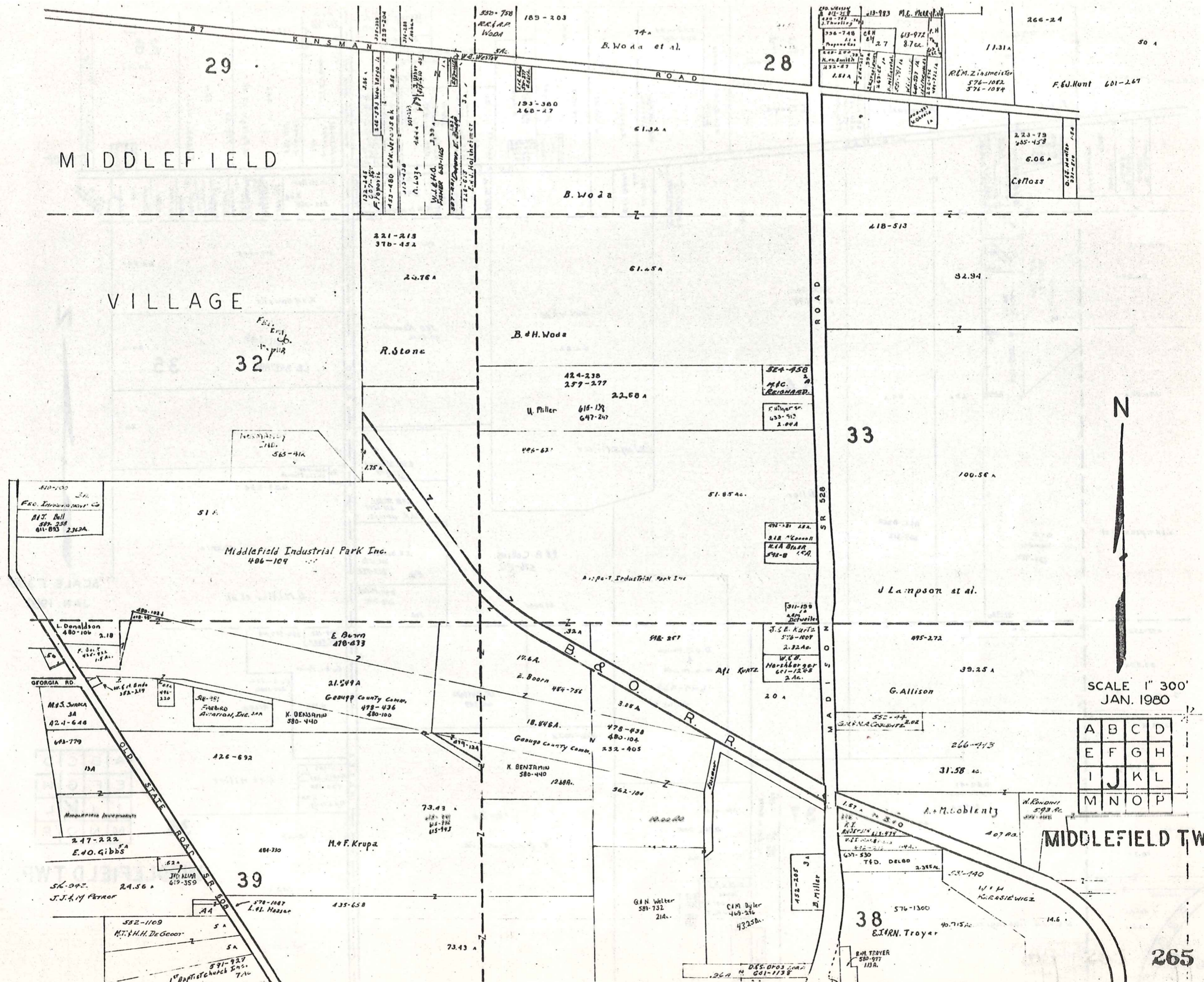
CRESTWOOD DRIVE NOT DEDICATED

315-363 Agreement of Restriction
CRESTWOOD SUB. DIV.
VOL. 6 PG. 77
LOT 30
SCALE 1"=200'



SCALE 1"=300'
JAN. 1980

A	B	C	D
E	F	G	H
I	J	K	L
M	N	O	P



MIDDLEFIELD

VILLAGE

29

28

32

33

39

38

SCALE 1" = 300'
JAN. 1980

A	B	C	D
E	F	G	H
I	J	K	L
M	N	O	P

MIDDLEFIELD TWP

265



F&J Hunt 601-267

243-181
571-1117, 1219

233-151
460-166

27

235-486
553-391

216-20
214-11
54-1250

R.F.B. Driscoll
213-177

312-467

167-468
26
29.08 A

E. Yoder

M. Zwolinsky

I. Troyer

W.E.A. Byler

E. Warrat

M. Warrat

A. Boggs

M. Peltge et al.

A. Miller

206-539
260-167
597-1228
F.W. Ouford

W.E.A. Byler
617-144

100-200
615-732

208-222

499-425

10.09 A

2788 Ac.

W.C. Schrock

A. Boggs

W.F. Socolar

T.E. Puddy

312-467

20 A

167-468

29.08 A

401-334

B.C. Chan
611-615

G.E. Williams
578-176

D.S. Shaw
518-176

D.S. Shaw
518-176

D.S. Shaw
518-176

D.S. Shaw
518-176

D.S. Shaw
518-176

D.S. Shaw
518-176

D.S. Shaw
518-176

D.S. Shaw
518-176

D.S. Shaw
518-176

D.S. Shaw
518-176

D.S. Shaw
518-176

D.S. Shaw
518-176

D.S. Shaw
518-176

D.S. Shaw
518-176

D.S. Shaw
518-176

D.S. Shaw
518-176

D.S. Shaw
518-176

D.S. Shaw
518-176

D.S. Shaw
518-176

D.S. Shaw
518-176

D.S. Shaw
518-176

D.S. Shaw
518-176

D.S. Shaw
518-176

603-915
322
C.E. Shaver

297-1
2.94 A

P.F. Cochran
611-811

E.D. Miller

502-364

3.68

502-364

377-565

26.80 A

R.H. Howells

611-349

20 A

I.R. Buttari

35

20 A

20 A

430-605
Amian Church

239-254

46.23 A

D. Miller et al.

509-167
O.E. Fear

582-97308

64 O.L. Miller

444-530
470-1006

11.18 A

91699

434-582
110
Karl Miller

425-186

2.20

R.G. Frilly

4.4 L Miller

58-508

100 A

THE WEAGER

2.5 A

2.5 A

2.5 A

2.5 A

2.5 A

2.5 A

2.5 A

2.5 A

2.5 A

2.5 A

2.5 A

2.5 A

2.5 A

2.5 A

2.5 A

2.5 A

2.5 A

2.5 A

2.5 A

2.5 A

2.5 A

2.5 A

2.5 A

2.5 A

2.5 A

2.5 A

2.5 A

2.5 A

2.5 A

2.5 A

2.5 A

2.5 A

2.5 A

2.5 A

2.5 A

2.5 A

2.5 A

2.5 A

2.5 A

2.5 A

2.5 A

2.5 A

2.5 A

2.5 A

2.5 A

2.5 A

2.5 A

2.5 A

2.5 A

2.5 A

2.5 A

2.5 A

2.5 A

2.5 A

2.5 A

2.5 A

2.5 A

2.5 A

2.5 A

2.5 A

2.5 A

2.5 A

2.5 A

2.5 A

2.5 A

2.5 A

2.5 A

2.5 A

2.5 A

2.5 A

2.5 A

2.5 A

2.5 A

2.5 A

2.5 A

2.5 A

2.5 A

2.5 A

2.5 A

2.5 A

2.5 A

2.5 A

2.5 A

2.5 A

2.5 A

2.5 A

2.5 A

2.5 A

2.5 A

2.5 A

2.5 A

2.5 A

2.5 A

2.5 A

2.5 A

2.5 A

2.5 A

2.5 A

2.5 A

2.5 A

2.5 A

2.5 A

2.5 A

2.5 A

2.5 A

2.5 A

2.5 A

2.5 A

2.5 A

2.5 A

2.5 A

2.5 A

2.5 A

2.5 A

2.5 A

2.5 A

2.5 A

2.5 A

2.5 A

2.5 A

2.5 A

2.5 A

2.5 A

2.5 A

2.5 A

2.5 A

2.5 A

2.5 A

2.5 A

2.5 A

2.5 A

2.5 A

2.5 A

2.5 A

2.5 A

2.5 A

2.5 A

2.5 A

2.5 A

2.5 A

2.5 A

2.5 A

2.5 A

2.5 A

2.5 A

2.5 A

2.5 A

2.5 A

2.5 A

2.5 A

2.5 A

2.5 A

2.5 A

2.5 A

2.5 A

2.5 A

2.5 A

2.5 A

2.5 A

2.5 A

2.5 A

2.5 A

2.5 A

2.5 A

2.5 A

2.5 A

2.5 A

2.5 A

2.5 A

2.5 A

2.5 A

2.5 A

2.5 A

2.5 A

2.5 A

2.5 A

2.5 A

2.5 A

2.5 A

2.5 A

2.5 A

2.5 A

2.5 A

2.5 A

2.5 A

2.5 A

2.5 A

2.5 A

2.5 A

2.5 A

2.5 A

2.5 A

2.5 A

2.5 A

2.5 A

2.5 A

2.5 A

2.5 A

2.5 A

2.5 A

2.5 A

2.5 A

2.5 A

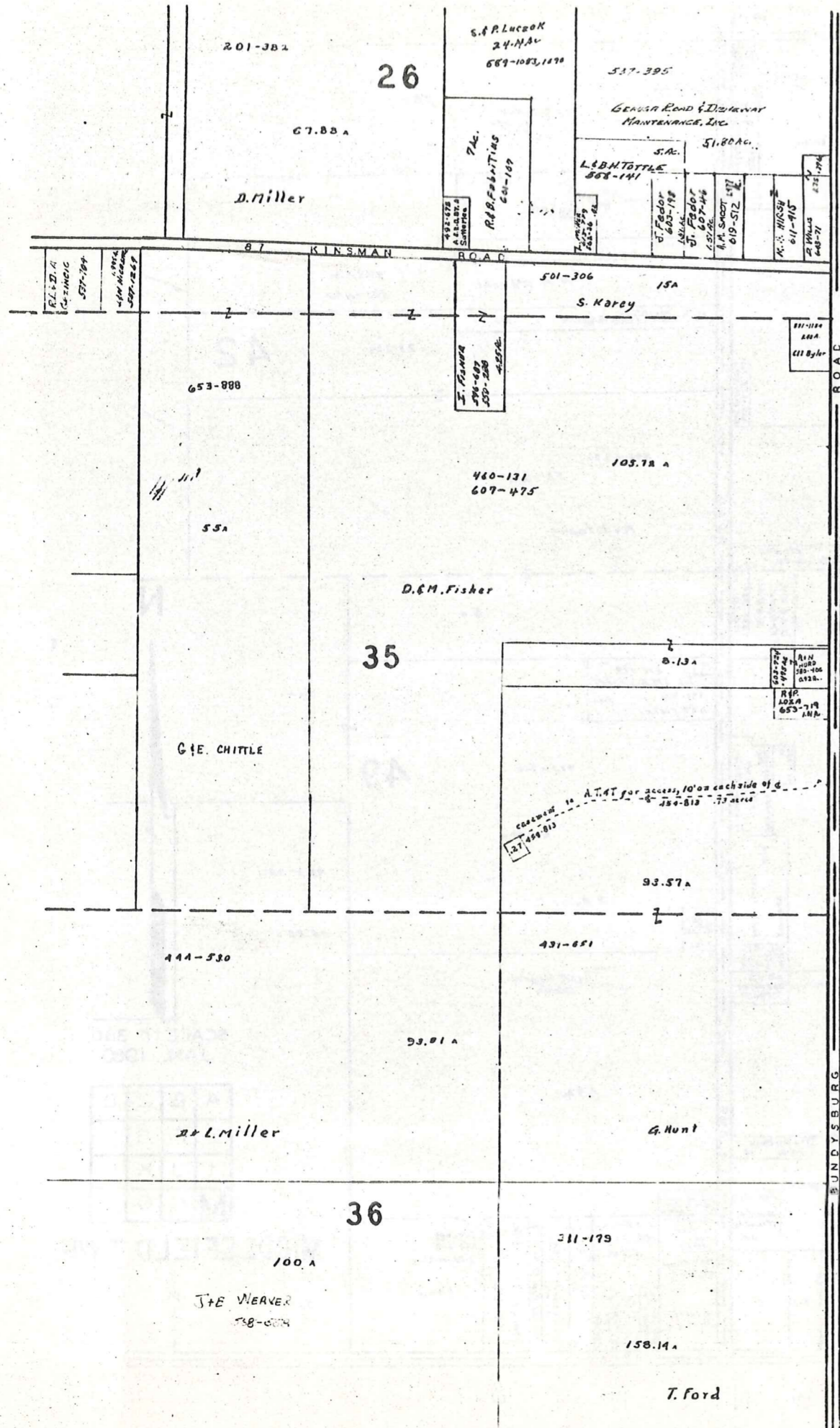
2.5 A

2.5 A

2.5 A

2.5 A

2.5 A



T R U M B U L L C O U N T Y

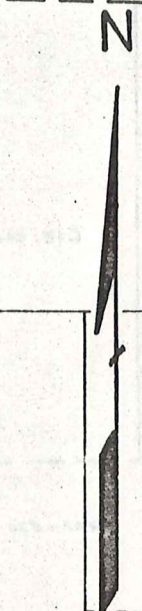
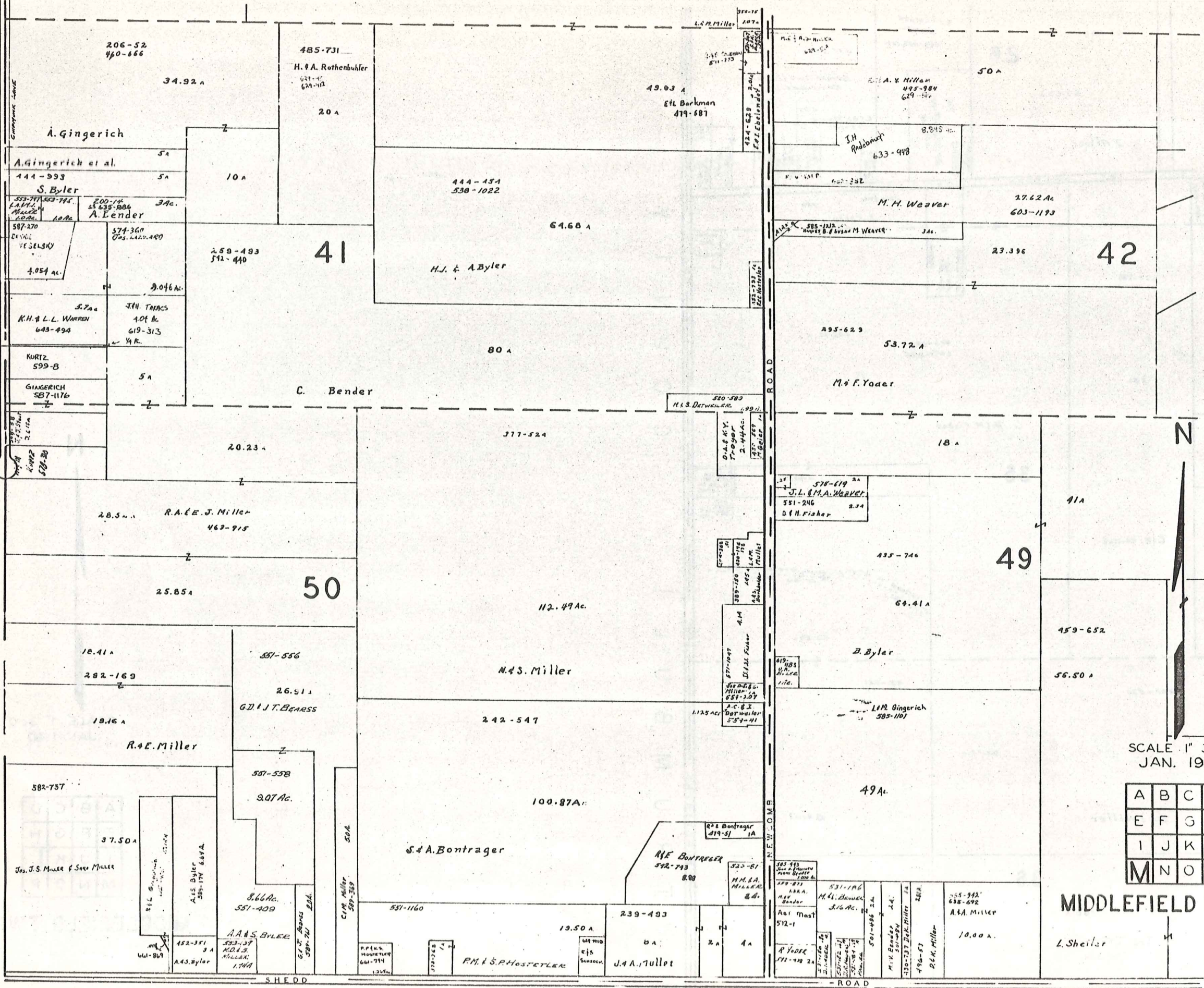


SCALE 1" = 300'
JAN. 1980

A	B	C	D
E	F	G	H
I	J	K	L
M	N	O	P

MIDDLEFIELD TWP.

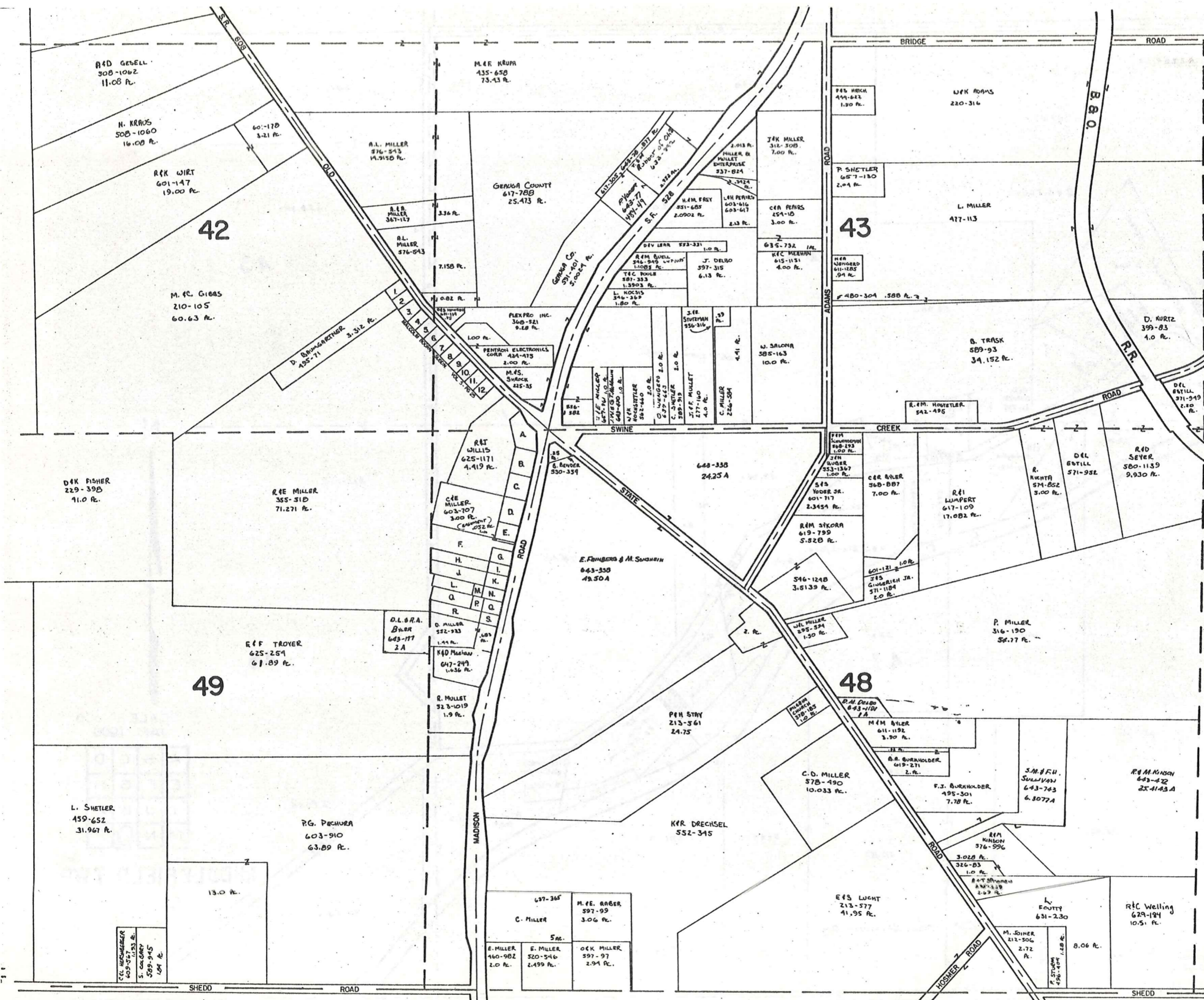
T O W N S H I P
B U R T O N
P A R K M A N
T O W N S H I P



SCALE 1" = 300'
JAN. 1980

A	B	C	D
E	F	G	H
I	J	K	L
M	N	O	P

MIDDLEFIELD TWP.



MALCOLM BOORN SUBD. V 5-P 25

1	F. BRUNGARTNER	163-282	19
2	D.M. MAHAN	196-437	19
3	F.B. WESTOVER	502-394	19
4	B. WESTOVER	444-329	19
5	F.B. WESTOVER	597-319	19
6	H.R. WESTOVER	463-635	19
7	F. DELBO	546-1889	23
8	F. DELBO	546-1889	19
9	F. DELBO	451-327	19
10	F. DELBO	451-327	19
11	A.F. DELVERE	524-1100	19
12	A.F. DELVERE	524-1100	19

PROPERTIES ALONG S.R. 52B

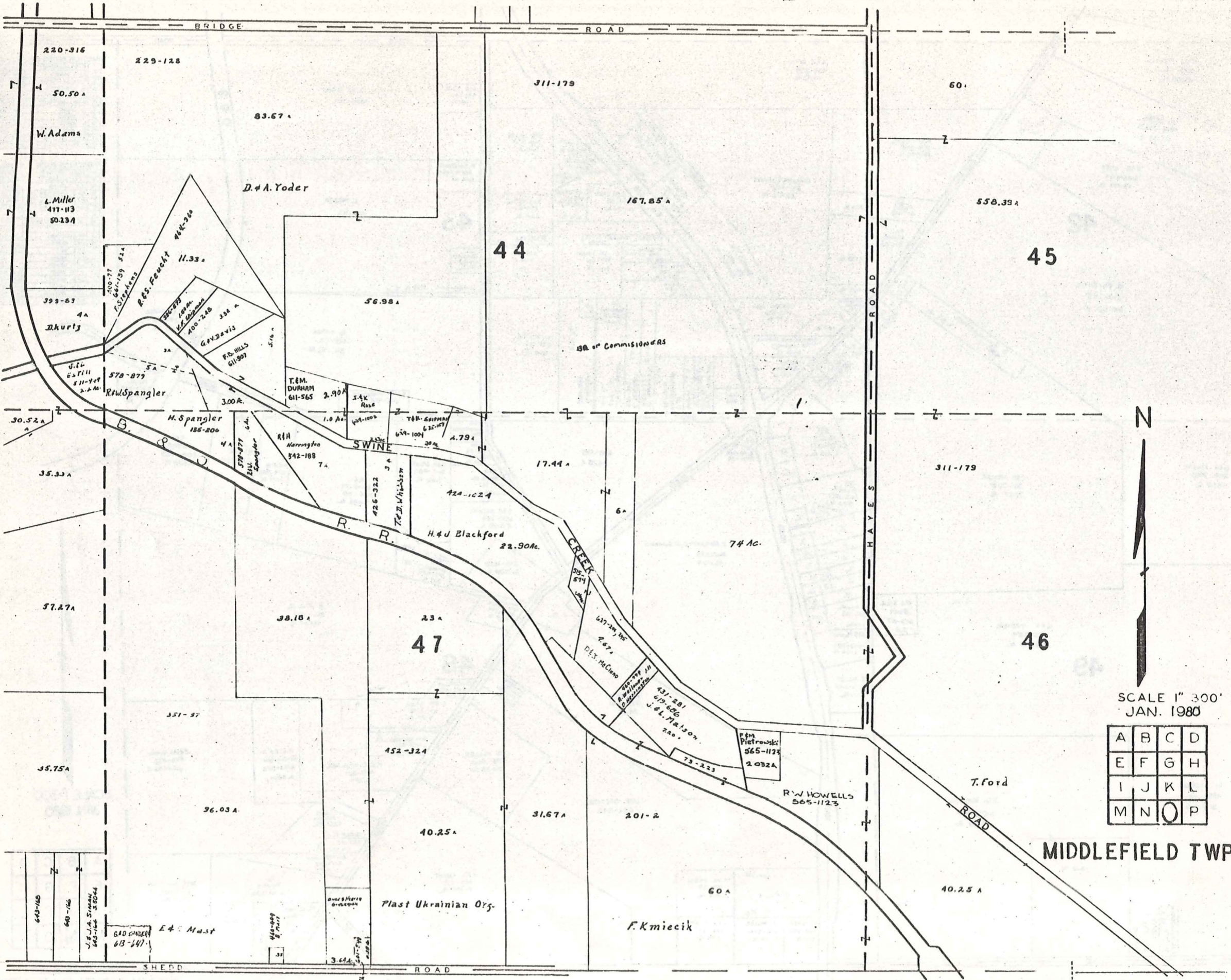
A	N.F. BENDER	653-818	12 A
B	L.S. BENDER	350-356	80 A
C	J.C. LARAR	505-85	75 A
D	B.F. HOSTETLER JR	599-1169	76 A
E	B.F. HOSTETLER JR	599-1174	77 A
F	W.H. BYLER	667-674	69 A
G	"	"	150
H	J. DONALDSON	687-100	65
I	"	637-187	50 A
J	A.H. BARNES	601-601	71 A
K	A.H. BARNES	601-601	70 A
L	K.R. DRANG	576-1121	53 A
M	K.R. DRANG	576-1120	53 A
N	K.R. DRANG	576-1120	53 A
O	D.S. HARDY	628-1179	54 A
P	D.S. HARDY	618-1179	54 A
Q	D.S. HARDY	628-1174	53 A
R	R.F. PARKER	351-147	65 A
S	H.J. PARKER	396-261	52 A

SCALE 1"=300'
JAN. 1980

A	B	C	D
E	F	G	H
I	J	K	L
M	N	O	P

P A R K M A N T O W N S H I P

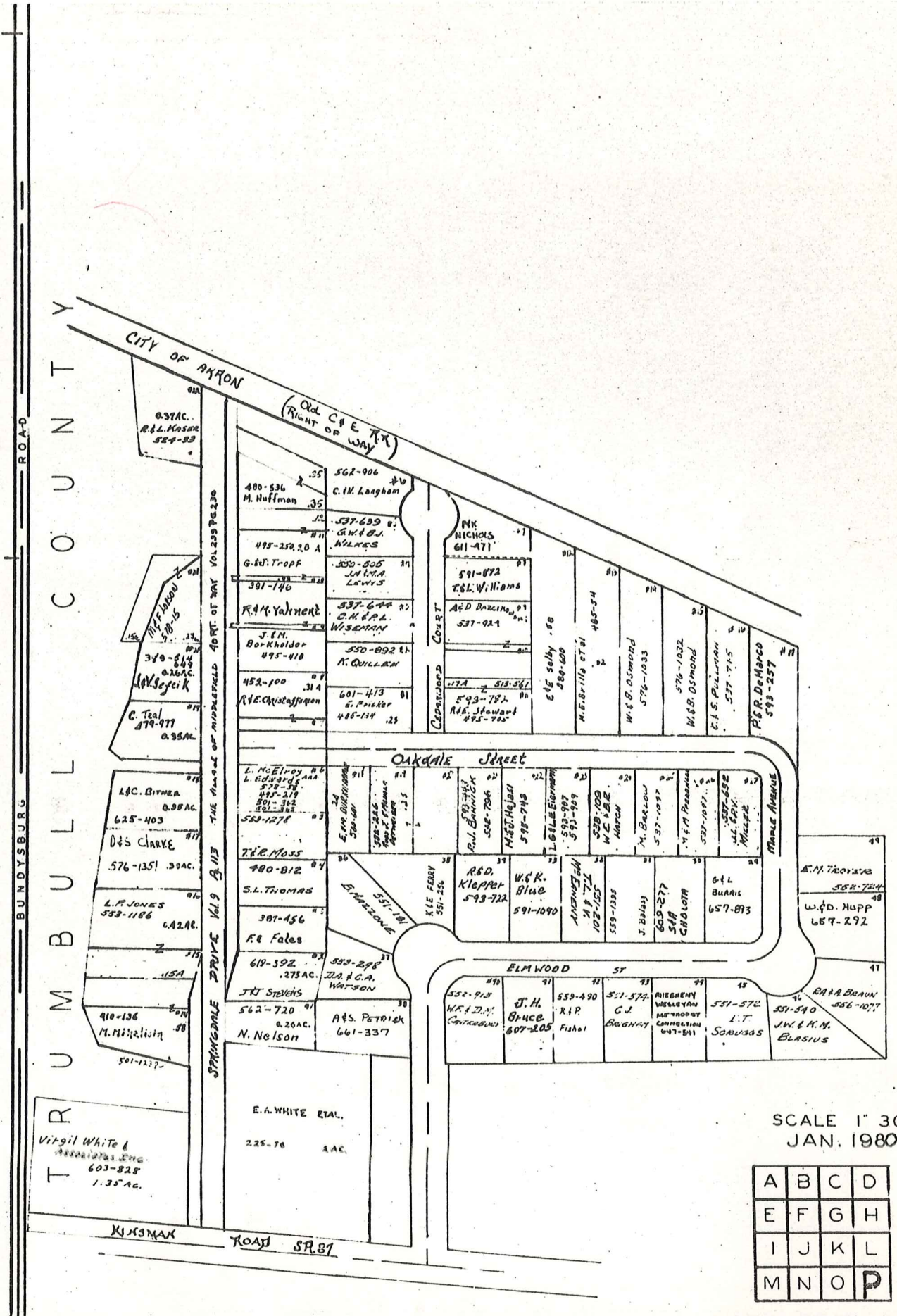
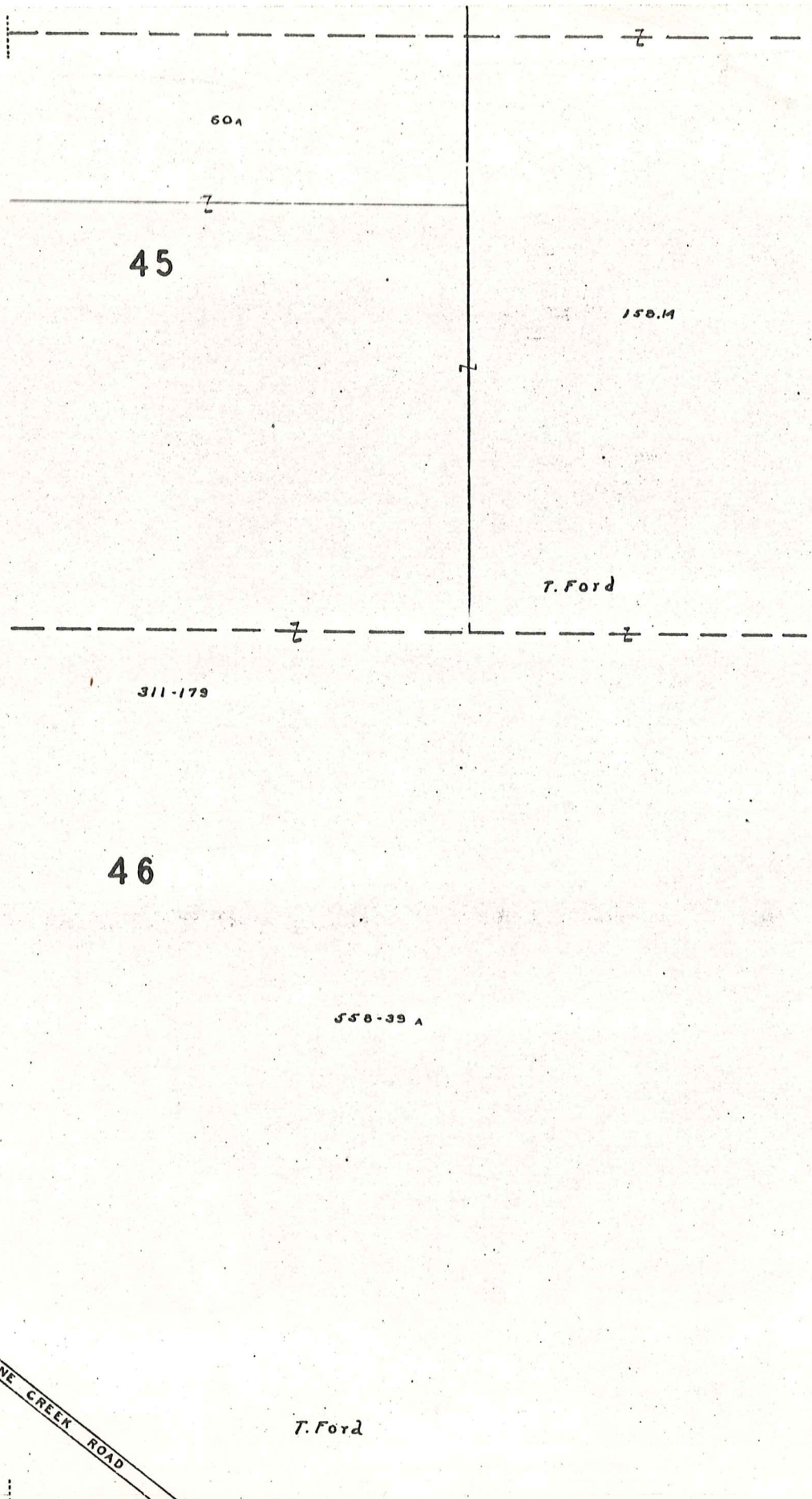
MIDDLEFIELD TWP. "N"



SCALE 1" = 300'
 JAN. 1980

A	B	C	D
E	F	G	H
I	J	K	L
M	N	O	P

MIDDLEFIELD TWP

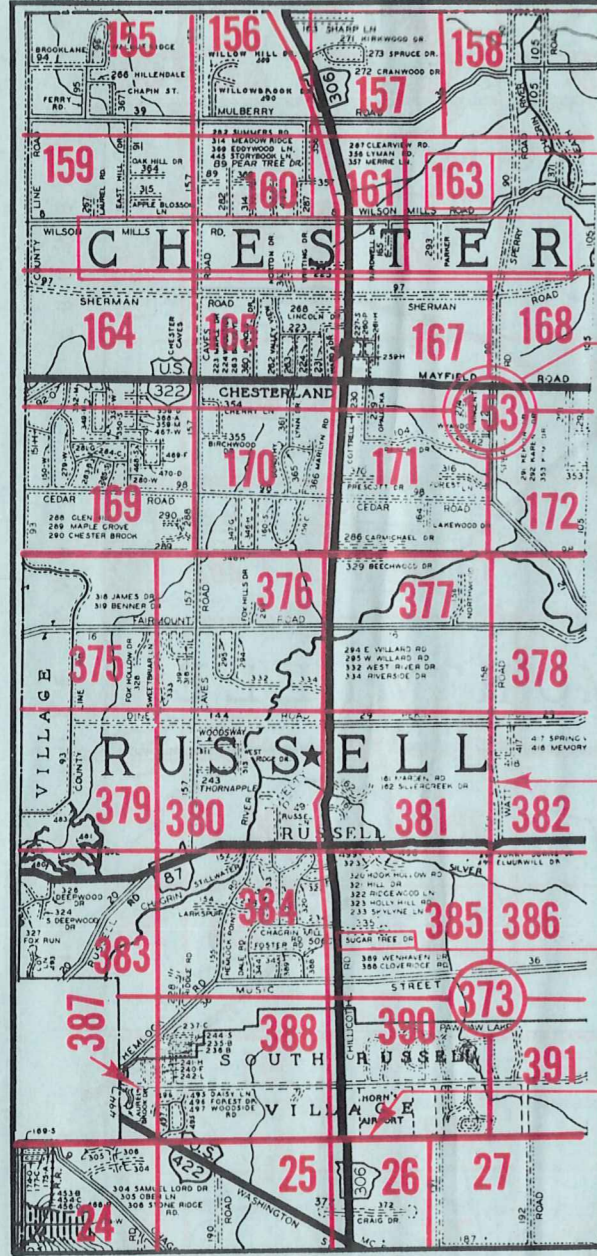


SCALE 1" = 300'
 JAN. 1980

A	B	C	D
E	F	G	H
I	J	K	L
M	N	O	P

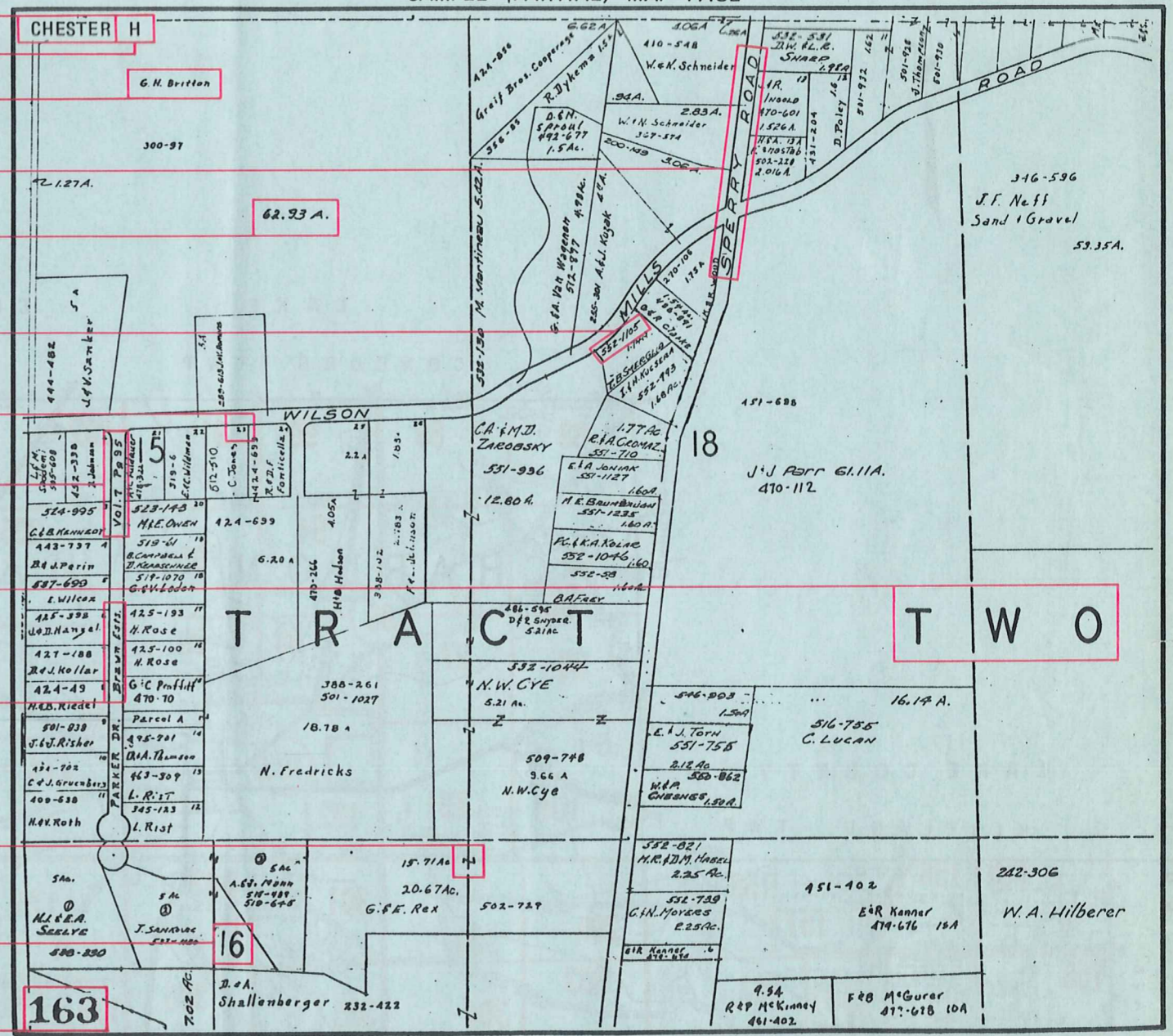
Explanation and Use Sheet for Geauga County, Ohio

SAMPLE (PARTIAL) COUNTY INDEX MAP



- Township Name
- Map Page Number (Or Letter)
- Owners Name
- Street Name
- Acreage
- Municipality Index Beginning Atlas Page Number
- Deed Book & Page
- Subdivision Lot Number
- Plat Book & Page
- Tract Number
- Atlas Page Boundary
- Subdivision Name
- Street Name
- Denotes Continuous Ownership
- Municipality Index Atlas Page Boundary
- Tract Lot Number
- Atlas Page Number

SAMPLE (PARTIAL) MAP PAGE



USE OF THE MAP VOLUME

1. LOCATE THE GENERAL AREA OF INTEREST ON THE COUNTY INDEX MAP, ATLAS PAGE 'B'.
2. A. IF PROPERTY IS IN A TOWNSHIP, NOTE THE ATLAS PAGE NUMBER. TURN TO THE PAGE INDICATED AND LOCATE SPECIFIC PARCEL OF INTEREST.
NOTE: ON SOME MAPS YOU MAY BE REFERRED TO A DETAIL SHEET SHOWING AN ENLARGEMENT OF THE AREA. THESE MAPS ARE FOUND AT THE END OF THE REGULAR MAP PAGES IN EACH TOWNSHIP EITHER IN ALPHABETICAL OR NUMERICAL SEQUENCE.
- B. IF PROPERTY IS IN A MUNICIPALITY, REFER TO THE TABLE OF CONTENTS, ATLAS PAGE 'C', AND NOTE THE BEGINNING ATLAS PAGE NUMBER FOR THE MUNICIPALITY OF INTEREST.
 - (1) TURN TO THE PAGE INDICATED. ON THIS PAGE WILL APPEAR AN INDEX MAP FOR THAT MUNICIPALITY.
 - (2) LOCATE SPECIFIC AREA OF INTEREST AND NOTE THE MAP PAGE NUMBER.
NOTE: DO NOT CONFUSE THE MAP PAGE NUMBER WITH THE ATLAS PAGE NUMBER IN THESE MUNICIPALITIES.
 - (3) FOLLOW EITHER ALPHABETICAL OR NUMERICAL SEQUENCE TO THE MAP PAGE INDICATED AND LOCATE SPECIFIC PARCEL OF INTEREST.